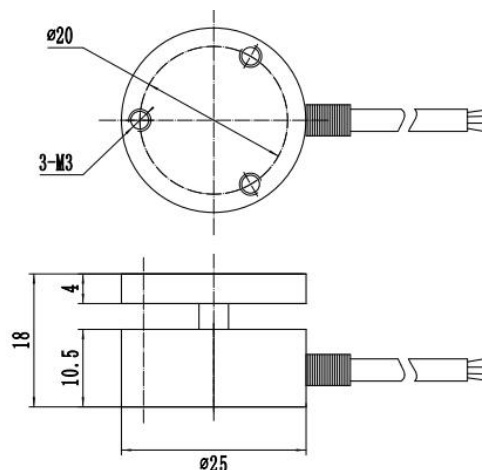


外形尺寸/ Dimensions



特点和用途 / Features & Applications

- 体积小，大量程，拉压双向，易于安装
 - 高动态响应，抗偏载
 - 适用于按键手感测试仪，冷热压机压力检测，机械人手抓力等领域
- ❖ Small size, large range, two-way tension and pressure, easy to install
 - ❖ High dynamic response, anti-bias
 - ❖ Suitable for key handle tester, hot and cold press pressure test, mechanical hand grip and other fields

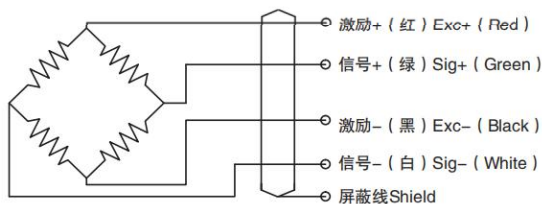
选型表 / Features & Applications

| | |
|--------|--------------------------------------------------------|
| 量程 Cap | 10kg, 20kg, 50kg, 100kg, 200kg, 300kg 500kg, 1t, 2t |
|--------|--------------------------------------------------------|

技术参数 / Technical Parameters

| | | | |
|-----------------------------|----------------------------|-------------------------------|--------------------------------|
| 量 程 Capacity | 10kg~2t | 绝缘阻抗 Insulation | $\geq 5000M\Omega/100V\ DC$ |
| 额定输出 Rated output | $1.0\sim 2.0\pm 0.05mV/V$ | 温度补偿范围 Compensated temp range | $-10^{\circ}C\sim 60^{\circ}C$ |
| 滞 后 Hysteresis | 0.3 % R.O. | 工作温度范围 temp range | $-20^{\circ}C\sim 80^{\circ}C$ |
| 重 复 性 Repeatability | 0.3% R.O. | 推荐激励电压 Recommended excitation | 5~10V DC |
| 非 线 性 Non-linearity | 0.5% R.O. | 安全载荷 Safe overload | 120% R.C. |
| 零点输出 Zero balance | $\pm 2\%$ R.O. | 最大负载 Ultimate overload | 150% R.C. |
| 蠕变 Creep | 0.1% R.O. | 响应频率 Response frequency | 10KHZ |
| 零点温漂 Temp.effect on zero | 0.1 % R.O. / $10^{\circ}C$ | 材质 Material | 合金钢 |
| 灵敏度温漂 Temp.effect on output | 0.1% R.O. / $10^{\circ}C$ | 电缆线规格 Cable Specifications | $\varnothing 3\times 2m$ |
| 输入阻抗 Input impedance | 350 Ω | 张缆极限拉力 Cable Ultimate pull | 10kg |
| 输出阻抗 Out impedance | 350 Ω | TEDS | 可选 |

接线图 / Schematic Wiring Diagram



注：屏蔽线不与弹性体相连。

Note: Cable shield is not connected to element.

受力方式/ Force Direction

