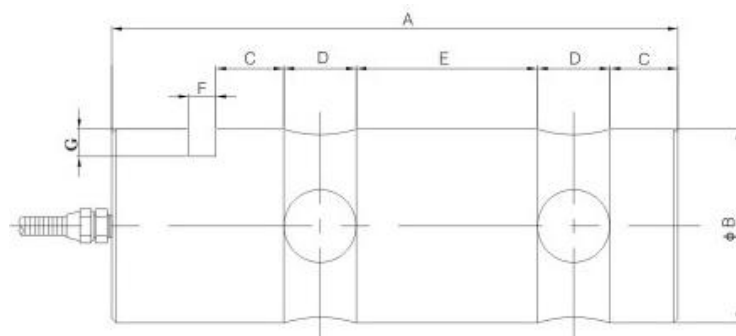


## 外形尺寸/ Dimensions



## 特点和用途 / Features &amp; Applications

- 采用轴销外形双剪切梁结构，抗偏载，抗扭曲，精度高
- 是测量轴承，滑轮等构件的径向载荷或钢丝绳张力的传用传感器，可以代堵住滑轮销轴安装在结构中作径向力测量，即能起到替代原有轴的功能，又起到称重测力传感器的作用
- 适用于起重，水利，船舶等行业的过程控制及系统测量
- ❖ Double shear beam structure with shaft pin shape, anti bias load, anti distortion, high precision
- ❖ Is a sensor for measuring radial load or wire rope tension of bearings, pulleys, It can be installed in the structure to measure radial force, that is, it can replace the original shaft, It also acts as a weighing force sensor
- ❖ Applicable to lifting, water conservancy, ship and other industries process control and

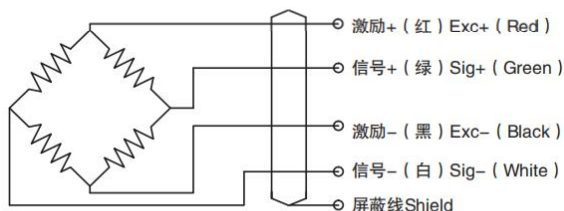
## 选型表 / Features &amp; Applications

量程 Cap	A	ΦB	C	D	E	F	G
2t-5t	120	40	15	15	25	6	6
10t	160	55	20	22	40	8	8
15-20t	200	65	25	27	50	10	8
30-40t	250	85	30	32	80	12	10

## 技术参数 / Technical Parameters

量 程 Capacity	0.05~15t	温度补偿范围 Compensated temp range	- 10° C ~ 60 ° C
额定输出 Rated output	1.0~1.5 ± 0.05 mV / V	工作温度范围 temp range	- 20 ° C ~ 80 ° C
滞 后 Hysteresis	± 0.1 % R.O.	推荐激励电压 Recommended excitation	10~15V DC
重 复 性 Repeatability	± 0.05% R.O.	安全载荷 Safe overload	150% R.C.
非 线 性 Non-linearity	± 0.1% R.O.	最大负载 Ultimate overload	200% R.C.
零点输出 Zero balance	± 1% R.O.	响应频率 Response frequency	10KHZ
蠕变 Creep	± 0.1 % R.O.	输入阻抗 Input impedance	750 ± 20Ω
零点温漂 Temp.effect on zero	± 0.05 % R.O. / 10° C	输出阻抗 Out impedance	750 ± 20Ω
灵敏度温漂 Temp.effect on output	± 0.05 % R.O. / ° 10C	绝缘阻抗 Insulation	≥ 5000M Ω / 50V DC

## 接线图 / Schematic Wiring Diagram



## 受力方式/ Force Direction

注：屏蔽线不与弹性体相连。

Note: Cable shield is not connected to element.