



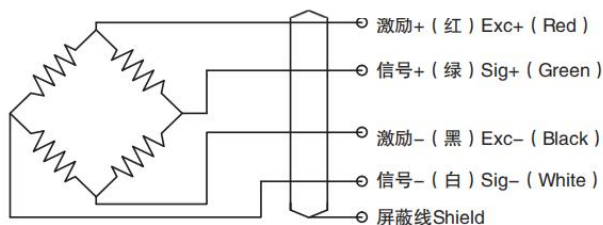
## 特点和用途 / Features &amp; Applications

- 上下法兰安装，高度低
- 主要应用于各种压力安装机械，压力保持设备等压式受力场所
- ❖ Upper and lower flange installation , low height
- ❖ Mainly applied in various pressure installation machinery , pressure holding equipment and other pressure stress places

## 技术参数 / Technical Parameters

量 程 Capacity	0.05~10t	温度补偿范围 Compensated temp range	- 10° C ~ 60 ° C
额定输出 Rated output	1.0~2.0 ±0.05mV / V	工作温度范围.temp range	- 20 °C~ 80 ° C
滞 后 Hysteresis	0.1 % R.O.	推荐激励电压 Recommended excitation	5~10V DC
重 复 性 Repeatability	0.1% R.O.	安全载荷 Safe overload	150% R.C.
非 线 性 Non-linearity	0.5% R.O.	最大负载 Ultimate overload	200% R.C.
零点输出 Zero balance	±2% R.O.	响应频率 Response frequency	10KHZ
蠕变 Creep	0.1 % R.O.	材质 Material	合金钢
零点温漂 Temp.effect on zero	0.05 % R.O. / 10° C	电缆线规格 Cable Specifications	Ø5*2m
灵敏度温漂 Temp.effect on output	0.05 % R.O. / ° 10C	张缆极限拉力 Cable Ultimate pull	10kg
输入阻抗 Input impedance	700 Ω	防护等级 Protection class	IP60
输出阻抗 Out impedance	700 Ω	TEDS	可选
绝缘阻抗 Insulation	≥5000M Ω /100V DC		

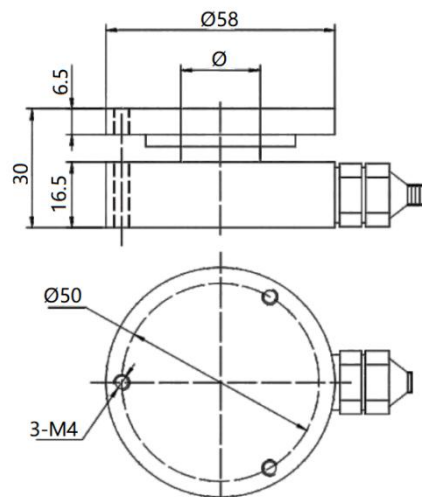
## 接线图 / Schematic Wiring Diagram



注：屏蔽线不与弹性体相连。

Note: Cable shield is not connected to element.

## 外形尺寸/ Dimensions



## 选型表 / Features &amp; Applications

量程 Cap	50kg,100kg,200kg,300kg,500kg, 1t,2t,3t,5t,10t
量程范围 Rang	Ø
50~500kg	10
1~10t	20

## 受力方式/ Force Direction

