



## 特点和用途 / Features &amp; Applications

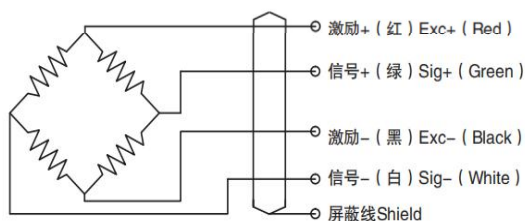
- 用于静态，非连续旋转扭矩力测量
- 可内置变送器（4-20mA,1-5V），可直接与 AD 卡，PLC 或 DCS 组成扭矩测量装置
- 稳定性好，抗干扰能力强
- 易安装，可任意位置，任意方向安装
- 不需要反复调零即可连续测量静止扭矩
- 应变弹性体强度大，可承受 150% 载荷
- 主应用于静态扭力测试仪器，如：微型电机试验台，阀门扭矩测试
- 电机测试台架，铰链疲劳测试，扭力校准标定，扭力扳手等

- ❖ For static, non-continuous rotating torque force measurement
- ❖ Built-in transmitter (4-20mA,1-5V) for torque measurement device directly with AD card, PLC or a DCS composition of a torque measuring device
- ❖ Good stability and strong interference resistance
- ❖ Easy to install, can be installed anywhere, in any direction
- ❖ Continuous measurement of static torque without repeated zero tuning
- ❖ Sstrain elastomer strength to withstand 150% load
- ❖ Main application to static torque test instruments, such as: micro-motor test bench, valve torque test motor test bench, Hinge fatigue test, torque calibration calibration, torque wrench, etc

## 技术参数 / Technical Parameters

量 程 Capacity	0~200N.m	绝缘阻抗 Insulation	$\geq 5000M\Omega/100V\ DC$
额定输出 Rated output	$2.0 \pm 10\% mV / V$	温度补偿范围 Compensated temp range	- 10° C ~ 60 ° C
滞 后 Hysteresis	0.3 % R.O.	工作温度范围 .temp range	- 20 ° C ~ 80 ° C
重 复 性 Repeatability	0.1% R.O.	推荐激励电压 Recommended excitation	5~15V DC
非 线 性 Non-linearity	0.1% R.O.	安全载荷 Safe overload	120% R.C.
零点输出 Zero balance	$\pm 2\% R.O.$	最大负载 Ultimate overload	150% R.C.
蠕变 Creep	0.1% R.O.	响应频率 Response frequency	10KHZ
零点温漂 Temp.effect on zero	0.05% R.O. / 10° C	材质 Material	合金钢
灵敏度温漂 Temp.effect on output	0.05% R.O. / ° 10C	电缆线规格 Cable Specifications	$\varnothing 5 \times 3m$
输入阻抗 Input impedance	350/700 $\Omega$	张缆极限拉力 Cable Ultimate pull	10kg
输出阻抗 Out impedance	350/700 $\Omega$	TEDS	可选

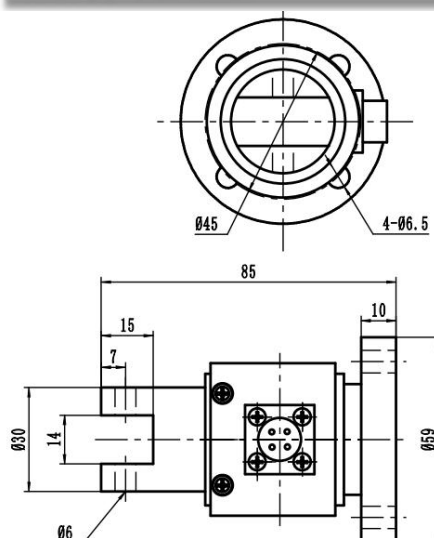
## 接线图 / Schematic Wiring Diagram



注：屏蔽线不与弹性体相连。

Note: Cable shield is not connected to element.

## 外形尺寸 / Dimensions



## 选型表 / Features &amp; Applications

量程 Cap	10, 20, 30, 50, 100, 200 (N.m)
--------	--------------------------------

## 受力方式/ Force Direction

