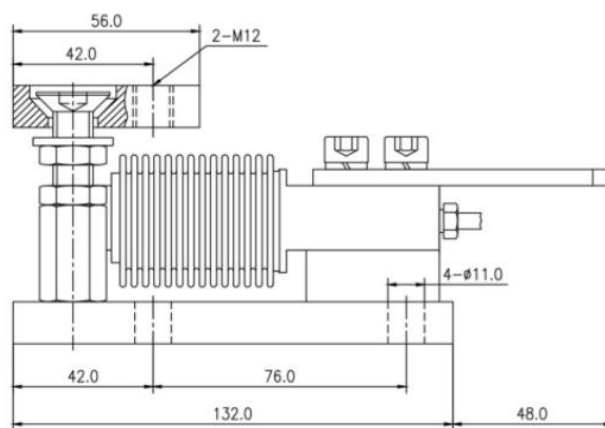
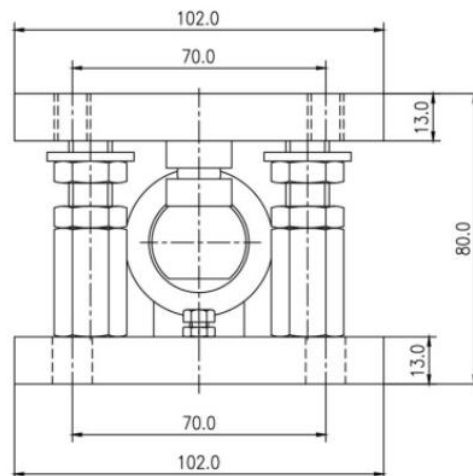
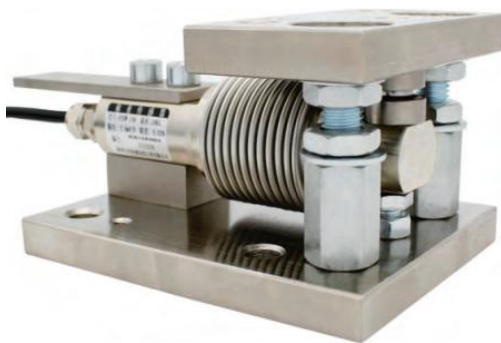


外形尺寸/ Dimensions



## 特点和用途 / Features &amp; Applications

- 结构紧凑，综合精度高，长期称定
- 应用领域：料斗秤，吊钩秤，包装秤等
- ❖ Compact structure, high comprehensive accuracy, long - term weighing
- ❖ Application: hopper scale, hook scale, packing scale, etc

## 选型表 / Features &amp; Applications

量程 Cap	10, 20, 50, 100, 200, 500kg
--------	-----------------------------

## 技术参数 / Technical Parameters

量 程 Capacity	0~500kg	绝缘阻抗 Insulation	$\geq 5000M\Omega/100V\ DC$
额定输出 Rated output	$2.0 \pm 0.002\ mV/V$	温度补偿范围 Compensated temp range	$-10^{\circ}C \sim 60^{\circ}C$
滞 后 Hysteresis	0.3 % R.O.	工作温度范围 temp range	$-20^{\circ}C \sim 80^{\circ}C$
重 复 性 Repeatability	0.3% R.O.	推荐激励电压 Recommended excitation	5~10V DC
非 线 性 Non-linearity	0.3% R.O.	安全载荷 Safe overload	150% R.C.
零点输出 Zero balance	$\pm 1\ %\ R.O.$	最大负载 Ultimate overload	200% R.C.
蠕变 Creep	0.1% R.O.	响应频率 Response frequency	10KHZ
零点温漂 Temp.effect on zero	0.1 % R.O. / $10^{\circ}C$	材质 Material	不锈钢
灵敏度温漂 Temp.effect on output	0.1 % R.O. / $^{\circ}10C$	电缆线规格 Cable Specifications	$\varnothing 5 \times 3m$
输入阻抗 Input impedance	$350\ \Omega$	张缆极限拉力 Cable Ultimate pull	10kg
输出阻抗 Out impedance	$350\ \Omega$	TEDS	可选

## 受力方式/ Force Direction

