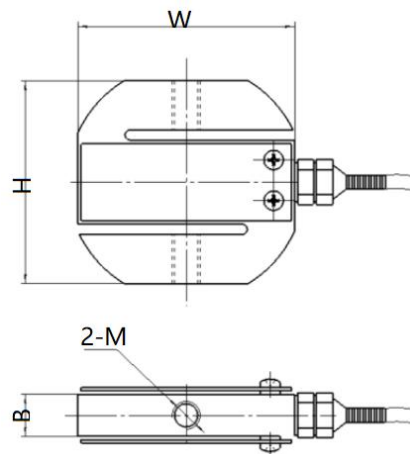




外形尺寸/ Dimensions



特点和用途 / Features & Applications

- 拉压双向，易于安装
- 适用于拉压试验机，料斗秤，吊钩秤，包装秤，皮带秤，插拔力测试仪等拉压力测试仪器以及自动化设备
- ❖ Double traction pressure for easy installation
- ❖ Appl icable to pull pressure tester , hop per scale , lifting hook scale , packing scale , belt scale , Pull - in pressure test instruments such as plug and force tester and automatic equipment

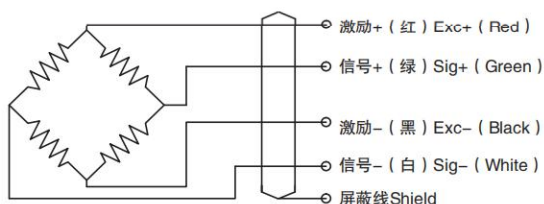
选型表 / Features & Applications

量程 Cap	W	H	B	M
1~30kg	62	58	12	M8*1.25
50~200kg	70	64	20	M12*1.75
300~500kg	70	64	20	M12*1.75
1t	70	64	25	M16*2
2~7t	84	92	32	M20*2.5

技术参数 / Technical Parameters

量 程 Capacity	1kg~7t	绝缘阻抗 Insulation	$\geq 5000M\Omega/100V\ DC$
额定输出 Rated output	$2.0 \pm 10\% mV/V$	温度补偿范围 Compensated temp range	$-10^{\circ}C \sim 60^{\circ}C$
滞 后 Hysteresis	0.03 % R.O.	工作温度范围 temp range	$-20^{\circ}C \sim 80^{\circ}C$
重 复 性 Repeatability	0.03% R.O.	推荐激励电压 Recommended excitation	5~10V DC
非 线 性 Non-linearity	0.03% R.O.	安全载荷 Safe overload	150% R.C.
零点输出 Zero balance	$\pm 1\% R.O.$	最大负载 Ultimate overload	200% R.C.
蠕变 Creep	0.03% R.O.	响应频率 Response frequency	10KHZ
零点温漂 Temp.effect on zero	0.05 % R.O. / $10^{\circ}C$	材质 Material	合金钢
灵敏度温漂 Temp.effect on output	0.03 % R.O. / $10^{\circ}C$	电缆线规格 Cable Specifications	$\varnothing 5*2m: 1kg\sim 1t$ $\varnothing 5*2m: 2\sim 7t$
输入阻抗 Input impedance	350 Ω	张缆极限拉力 Cable Ultimate pull	10kg
输出阻抗 Out impedance	350 Ω	TEDS	可选

接线图 / Schematic Wiring Diagram



注：屏蔽线不与弹性体相连。

Note: Cable shield is not connected to element.

受力方式/ Force Direction

