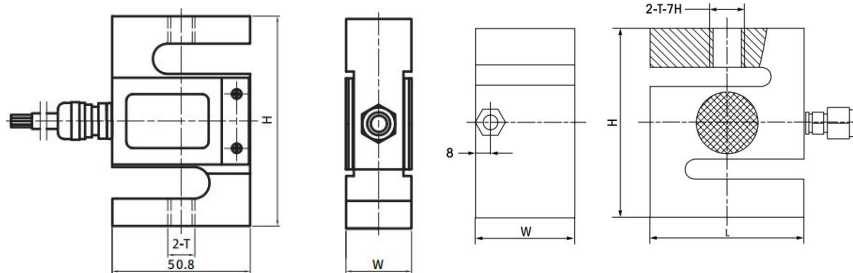


外形尺寸/ Dimensions



选型表 / Features & Applications

特点和用途 / Features & Applications

- 拉压双向，易于安装
- 适用于拉压试验机，料斗秤，吊钩秤，包装秤，皮带秤，插拔力测试仪等拉压力测试仪器以及自动化设备
- ❖ Double traction pressure for easy installation
- ❖ Applicable to pull pressure tester, hopper scale, lifting hook scale, packing scale, belt scale, Pull-in pressure test instruments such as plug and force tester and automatic equipment

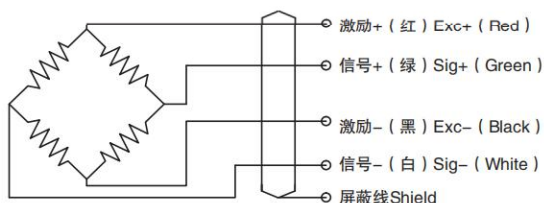
量程 Cap	W	T
50~200kg	18.5	M10*1
300kg	24.4	M10*1
500kg	24.4	M12*1
1t	36	M12*1

量程 Cap	L	H	W	T
2t	70	86	45	M16*1.5
3t	80	100	50	M18*1.5
5t	92	130	58	M20*5

技术参数 / Technical Parameters

量程 Capacity	50kg~5t	绝缘阻抗 Insulation	$\geq 5000M\Omega / 100V DC$
额定输出 Rated output	$2.0 \sim 3.0 \pm 10\% mV / V$	温度补偿范围 Compensated temp range	$-10^{\circ}C \sim 60^{\circ}C$
滞后 Hysteresis	0.03 % R.O.	工作温度范围 temp range	$-20^{\circ}C \sim 80^{\circ}C$
重复性 Repeatability	0.03% R.O.	推荐激励电压 Recommended excitation	5~10V DC
非线性 Non-linearity	0.05% R.O.	安全载荷 Safe overload	150% R.C.
零点输出 Zero balance	$\pm 1\% R.O.$	最大负载 Ultimate overload	200% R.C.
蠕变 Creep	0.03% R.O.	响应频率 Response frequency	10KHZ
零点温漂 Temp.effect on zero	0.05 % R.O. / $10^{\circ}C$	材质 Material	合金钢
灵敏度温漂 Temp.effect on output	0.03 % R.O. / $10^{\circ}C$	电缆线规格 Cable Specifications	$\varnothing 5 \times 6m$
输入阻抗 Input impedance	350 Ω	张缆极限拉力 Cable Ultimate pull	10kg
输出阻抗 Out impedance	350 Ω	TEDS	可选

接线图 / Schematic Wiring Diagram



注：屏蔽线不与弹性体相连。

Note: Cable shield is not connected to element.

受力方式/ Force Direction

